

## WE CAN HELP

PACER provides a central source for families of children and young adults with disabilities and professionals to obtain support, advocacy, and information.

PACER services include:

- training and informing parents and professionals,
- helping families obtain appropriate education and services for their children with disabilities,
- working to improve education results for all children,
- resolving problems between families and schools or other agencies, and
- connecting children with disabilities to community resources that address their needs.

Call (952) 838-9000 for more information on PACER and its programs.



## WHO WE ARE

PACER is a parent center for families of children and young adults with all disabilities—physical, mental, learning, and emotional. PACER Center is based on a parents-helping-parents philosophy.

PACER's **free** Publications Catalog offers educational materials to parents and professionals on issues related to special education and disabilities.

### Paula F. Goldberg

PACER Executive Director

8161 Normandale Boulevard  
Minneapolis, MN 55437-1044  
952.838.9000 *voice*  
952.838.0190 *TTY*



952.838.0199 *fax*  
pacer@pacer.org  
[www.pacer.org](http://www.pacer.org)

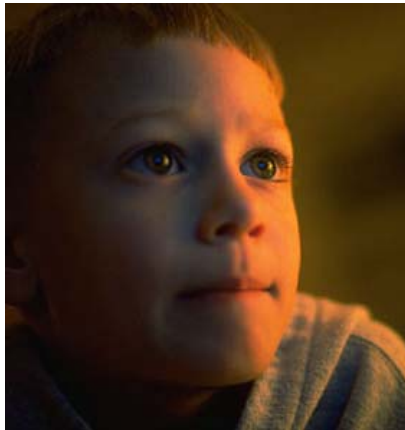
## NEW ITEM!

### Is Your Child a Target of Bullying? Intervention Strategies for Parents of Children with Disabilities



A new **ALLIANCE curriculum** developed specifically for professionals to present to parents of children with disabilities who are the targets of bullying.

# NEW PACER CURRICULUM!



## Is Your Child a Target of Bullying? Intervention Strategies for Parents of Children with Disabilities

A new, one-of-a-kind curriculum developed for parent audiences has just been released by PACER Center. The appealing design and easy-to-understand, common-sense suggestions are sure to inform and encourage families as they address bullying issues.

Available on CD-ROM or on overhead color transparencies with a printed script. **\$15 CD-ROM/\$165 Color Transparencies with Script.**

**Is Your Child a Target of Bullying?** is a valuable resource for any person working with bullying issues.

### The curriculum covers:

- defining disability harassment
- common views about bullying and the types of bullying
- how to talk with your child about bullying
- methods for the target to react to the bullying behavior
- using the individualized education program (IEP) to react to bullying behavior
- federal laws that apply to disability harassment
- role of school policy to respond/prevent disability harassment

### Professionals and parents talk about the curriculum:

**"This curriculum has provided me with useful information** that I can share with parents to help them protect their child from bullying behavior."

"I felt that participants, after attending the workshop, had **concrete, tangible ideas on how they can be more effective in helping their child** and working with school districts to intervene against bullying behavior."

**"Now I am more confident in responding to parents questions about bullying** and can offer them more options for intervention."

Name/Organization: \_\_\_\_\_

Address: \_\_\_\_\_

City: \_\_\_\_\_

State: \_\_\_\_\_ Zip: \_\_\_\_\_

Phone (h): \_\_\_\_\_

Phone (w): \_\_\_\_\_

E-mail: \_\_\_\_\_

**YES!** Please send me a **FREE** copy of the PACER Publication Catalog.

Please send \_\_\_\_\_ copies of **Is Your Child a Target of Bullying?** at **\$15 each (CD-ROM).**

Please send \_\_\_\_\_ copies of **\$165 for overhead transparencies** with printed script.

Subtotal \_\_\_\_\_

Sales Tax\* \_\_\_\_\_

Total \_\_\_\_\_

\*Minnesota residents add 6.5% sales tax. Minneapolis residents add 7%. Residents of other states pay no sales tax. Minnesota residents claiming tax-exemption **must** include a copy of their "Certificate of Exempt Status." **Please make checks payable to PACER Center.**

PACER ORDER FORM

### PACER Center, Inc.

8161 Normandale Blvd. • Minneapolis, MN 55437 • (952) 838.9000 • (952) 838.0199 fax  
(888) 248-0822 toll-free • [pacer@pacer.org](mailto:pacer@pacer.org) • [www.pacer.org](http://www.pacer.org)